

ELESHELL 10.2K



Safe and reliable

Lithium iron phosphate battery has strong safety, long service life of ten years and high power efficiency.

Flexible configuration

Multiple battery modules can be connected in parallel to increase capacity and power.

Intelligence

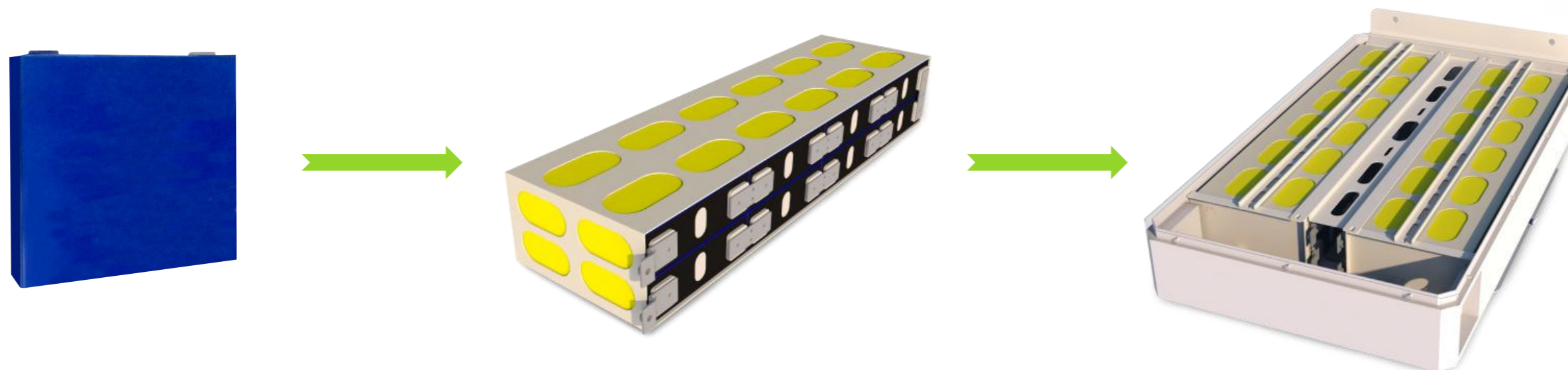
Compatible with multi - brand inverter communication.

Environmentally friendly

Easy to install, product module safety, pollution-free.



ELESHELL 10.2K



Cell parameters	
Rated voltage(V)	3.2
Rated capacity(Ah)	200
Charge Discharge Rate(C)	0.5
Cycle Life(25 °C,0.5C/0.5C,@80%DOD)	>6000
Dimensions(L*W*H)(mm)	174*54*200.5

Battery module parameters	
Configuration	1P8S
Rated voltage(V)	25.6
Operating voltage(V)	23.2-29
Rated capacity(Ah)	200
Rated energy(kWh)	5.12
Max continuous current(A)	100
Operating temperature(°C)	0-55
Weight(kg)	33
Dimensions(L*W*H)(mm)	701*205*116

Battery Pack parameters	
Configuration	1P16S
Rated voltage(V)	51.2
Operating voltage(V)	46.4-57.9
Rated capacity(Ah)	200
Rated energy(kWh)	10.24
Max continuous current(A)	100
Operating temperature(°C)	0-55
Weight(kg)	102.3
Dimensions(L*W*H)(mm)	871.1*519*133

ELESHELL 14.3K



Safe and reliable

Lithium iron phosphate battery has strong safety, long service life of ten years and high power efficiency.

Flexible configuration

Multiple battery modules can be connected in parallel to increase capacity and power.

Intelligence

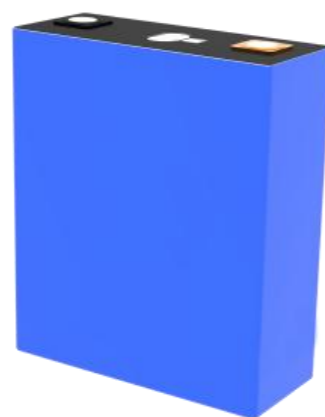
Compatible with multi - brand inverter communication.

Environmentally friendly

Easy to install, product module safety, pollution-free.



ELESHELL 14.3K



Cell parameters	
Rated voltage(V)	3.2
Rated capacity(Ah)	280
Charge Discharge Rate(C)	1
Cycle Life(25°C,0.5C/0.5C,@80%DOD)	>8000
Dimensions(L*W*H)(mm)	174.7*71.5*207

Battery Pack parameters	
Configuration	1P16S
Rated voltage(V)	51.2
Operating voltage(V)	46.4-57.9
Rated capacity(Ah)	280
Rated energy(kWh)	14.3
Max continuous current(A)	100
Operating temperature(°C)	0-55
Weight(kg)	120
Dimensions(L*W*H)(mm)	750*412*235

