

# Tiger Pro 72HC-BDVP

## 530-550 Watt

BIFACIAL MODULE WITH  
DUAL GLASS

### P-Type

Positive power tolerance of 0~+3%

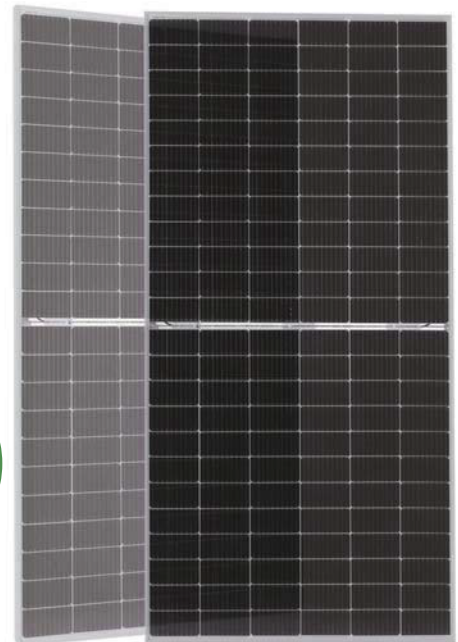
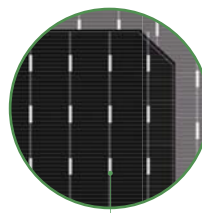
IEC61215(2005), IEC61730(2004)

ISO9001:2015: Quality Management System

ISO14001:2015: Environment Management System

ISO45001:2018

Occupational health and safety management systems



Bifacial Technology

## Key Features



### Multi Busbar Technology

Better light trapping and current collection to improve module power output and reliability.



### PID Resistance

Excellent Anti-PID performance guarantee via optimized mass-production process and materials control.



### Higher Power Output

Module power increases 5-25% generally, bringing significantly lower LCOE and higher IRR.



### Longer Life-time Power Yield

0.45% annual power degradation and 30 year linear power warranty.



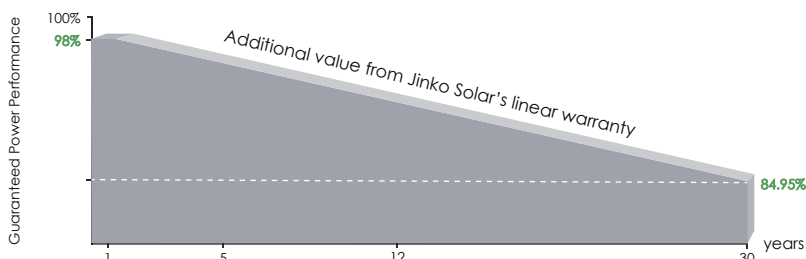
### Enhanced Mechanical Load

Certified to withstand: wind load (2400 Pascal) and snow load (5400 Pascal).



POSITIVE QUALITY™  
Continuous Quality Assurance

## LINEAR PERFORMANCE WARRANTY

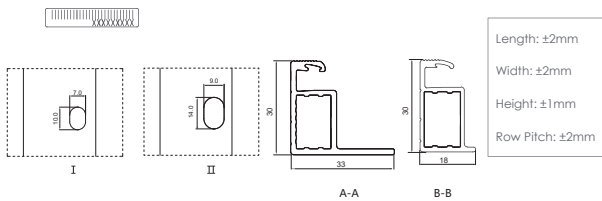
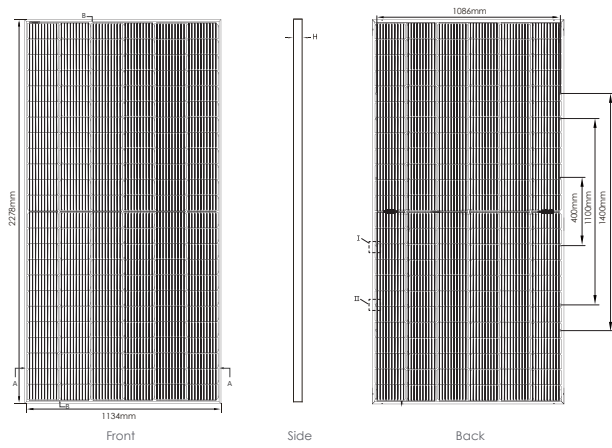


**12** Year Product Warranty

**30** Year Linear Power Warranty

**0.45%** Annual Degradation Over 30 years

## Engineering Drawings

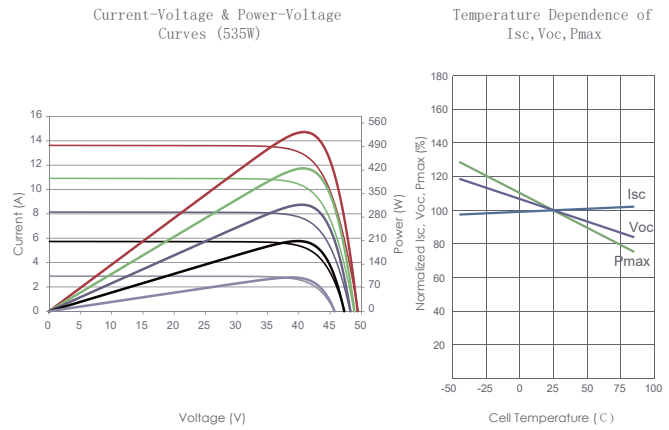


## Packaging Configuration

( Two pallets = One stack )

36pcs/pallets, 72pcs/stack, 720pcs/ 40'HQ Container

## Electrical Performance & Temperature Dependence



## Mechanical Characteristics

Cell Type	P type Mono-crystalline
No. of cells	144 (6×24)
Dimensions	2278×1134×30mm (89.69×44.65×1.18 inch)
Weight	32 kg (70.55 lbs)
Front Glass	2.0mm, Anti-Reflection Coating
Back Glass	2.0mm, Heat Strengthened Glass
Frame	Anodized Aluminium Alloy
Junction Box	IP68 Rated
Output Cables	TUV 1×4.0mm <sup>2</sup> (+): 400mm , (-): 200mm or Customized Length

## SPECIFICATIONS

Module Type	JKM530M-72HL4-BDVP		JKM535M-72HL4-BDVP		JKM540M-72HL4-BDVP		JKM545M-72HL4-BDVP		JKM550M-72HL4-BDVP	
	STC	NOCT	STC	NOCT	STC	NOCT	STC	NOCT	STC	NOCT
Maximum Power (Pmax)	530Wp	394Wp	535Wp	398Wp	540Wp	402Wp	545Wp	405Wp	550Wp	409Wp
Maximum Power Voltage (Vmp)	40.49V	37.70V	40.63V	37.84V	40.76V	37.97V	40.89V	38.11V	41.02V	38.31V
Maximum Power Current (Imp)	13.09A	10.46A	13.17A	10.52A	13.25A	10.58A	13.33A	10.64A	13.41A	10.68A
Open-circuit Voltage (Voc)	48.99V	46.24V	49.13V	46.37V	49.26V	46.50V	49.39V	46.62V	49.52V	46.74V
Short-circuit Current (Isc)	13.77A	11.12A	13.85A	11.19A	13.93A	11.25A	14.01A	11.32A	14.09A	11.38A
Module Efficiency STC (%)	20.52%		20.71%		20.90%		21.10%		21.29%	
Operating Temperature (°C)	-40°C~+85°C									
Maximum system voltage	1500VDC (IEC)									
Maximum series fuse rating	30A									
Power tolerance	0~+3%									
Temperature coefficients of Pmax	-0.35%/°C									
Temperature coefficients of Voc	-0.28%/°C									
Temperature coefficients of Isc	0.048%/°C									
Nominal operating cell temperature (NOCT)	45±2°C									
Refer. Bifacial Factor	70±5%									

## BIFACIAL OUTPUT-REAR SIDE POWER GAIN

		JKM530M-72HL4-BDVP		JKM535M-72HL4-BDVP		JKM540M-72HL4-BDVP		JKM545M-72HL4-BDVP		JKM550M-72HL4-BDVP		
		5%	15%	25%	5%	15%	25%	5%	15%	25%	5%	15%
5%	Maximum Power (Pmax)	557Wp	562Wp	567Wp	572Wp	578Wp						
	Module Efficiency STC (%)	21.58%	21.78%	21.99%	22.19%	22.37%						
15%	Maximum Power (Pmax)	610Wp	615Wp	621Wp	623Wp	633Wp						
	Module Efficiency STC (%)	23.64%	23.86%	24.08%	24.30%	24.50%						
25%	Maximum Power (Pmax)	663Wp	669Wp	675Wp	681Wp	688Wp						
	Module Efficiency STC (%)	25.69%	25.93%	26.18%	26.42%	26.63%						

\*STC: Irradiance 1000W/m<sup>2</sup> Cell Temperature 25°C AM=1.5  
 NOCT: Irradiance 800W/m<sup>2</sup> Ambient Temperature 20°C AM=1.5 Wind Speed 1m/s