

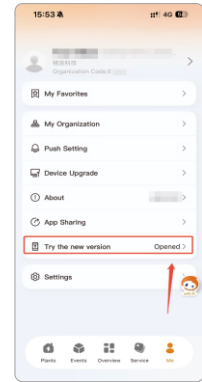


2 Procedure:

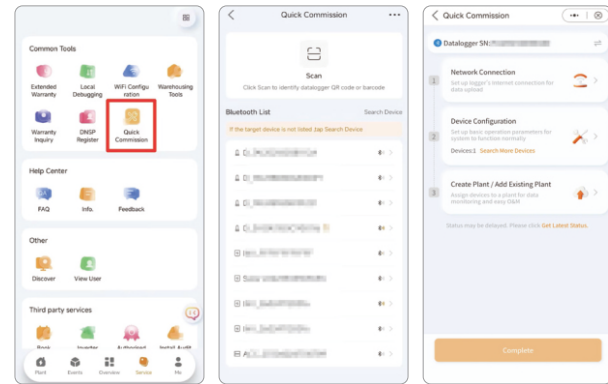
To download the app, scan the QR code or search for "SolisCloud" in your app store. Log in to SolisCloud with your username and password. If you don't have an account, click 'Sign up' and follow the prompts to create one.



Note: The version needs to be higher than V5.2.221 and ME-Try the new version is opened.

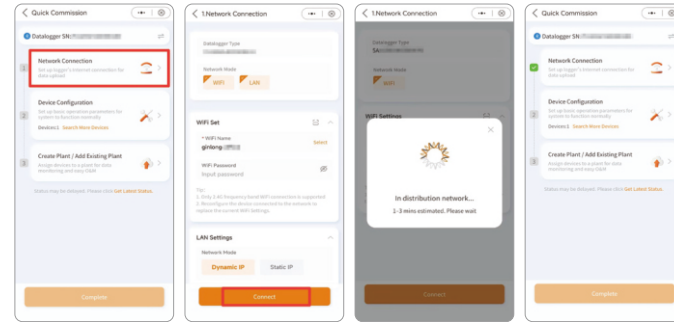


Accessing the Feature: Go to [Service] -> [Common Tools] -> [Quick Commission]. Scan the logger's QR code or select the logger from the Bluetooth list to enter the Quick Commission page.



Step1 - Network Connection:

Click [Network Connection]. The system will automatically identify the logger type and mode. Please make the corresponding settings according to the prompts. After configuration, click [Connect] to complete the connection. The Network Connection step will be highlighted.

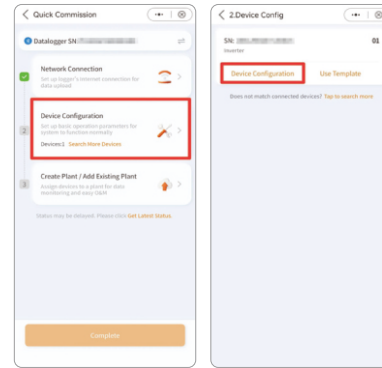


Note: When setting up WiFi, you can scan a WiFi QR code shared by others, or click [select] to choose a WiFi network (on Android, this opens a drop-down list; on iOS, it redirects to system settings).

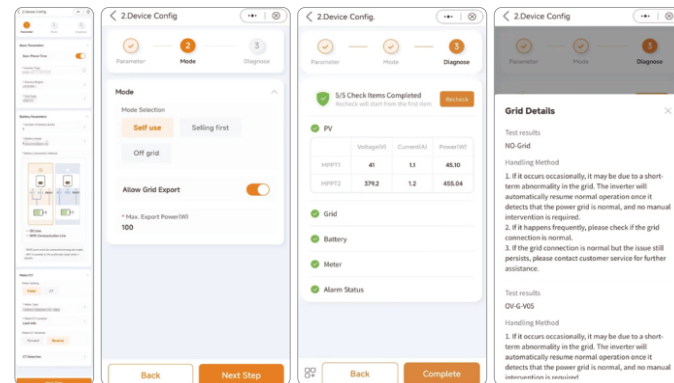
Step2 - Device Configuration

Click [Device Configuration]. All inverter devices connected to the current logger will be displayed. Proceed in order: Set Parameters -> Set Energy Storage Mode -> Diagnosis.

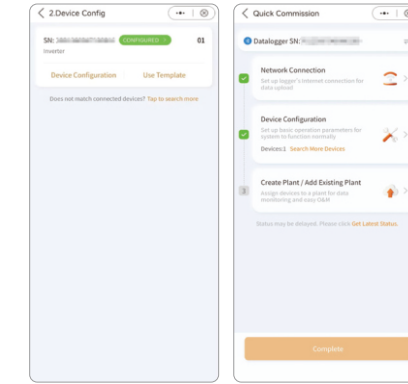
Note: Configurable parameters vary by device model. Please follow the options available on your specific interface.



Diagnosis includes 5 diagnostic items: PV, Grid, Battery, Meter, Alarm Status. If an issue is found in any item, you can click to view detailed information and suggested solutions.



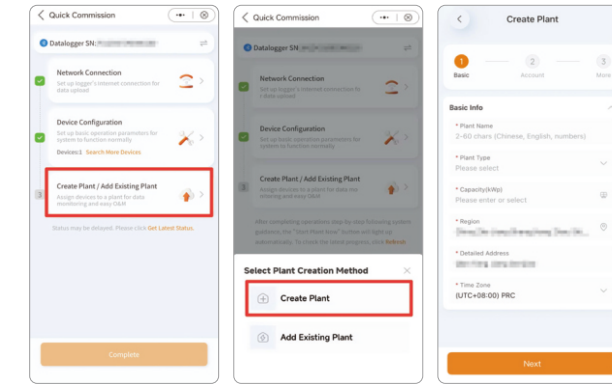
After configuration is complete, the device will be marked as [CONFIGURED], and the Device Configuration step will be highlighted. You can click [CONFIGURED] to jump directly to the local device details page.



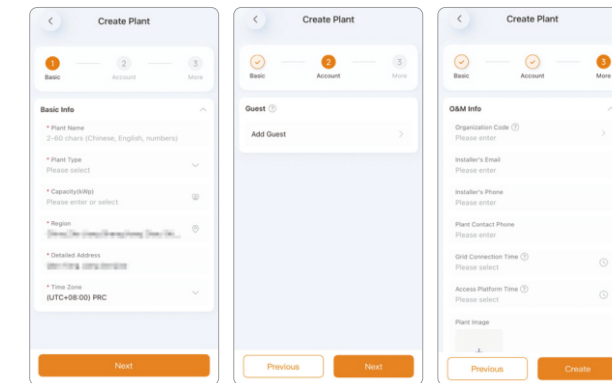
Step3 - Create Plant/Add Existing Plant

Create Plant

If you want to bind the devices to a new plant, click [Create Plant].

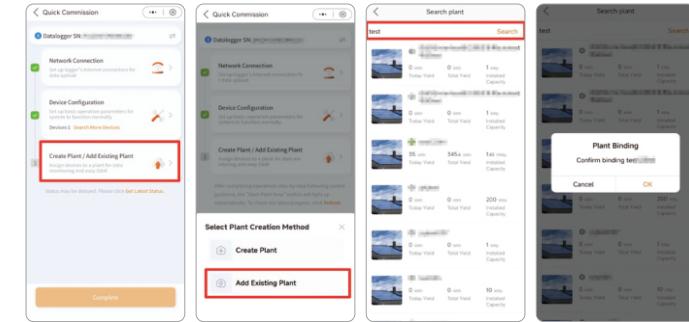


Follow the instructions to fill in the relevant information and complete the plant creation.

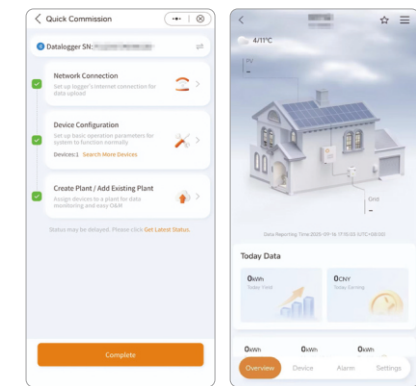


Add Existing Plant

If you want to bind the devices to an existing plant, click [Add Existing Plant]. You can search and view all plants under your account. Select a plant and click [OK].



After completing the above steps, the Create Plant/Add Existing Plant step will be highlighted. Click [Complete] to enter the plant page and complete the commissioning.



Copyright Notice:

Copyright © Ginlong Energy Storage Co., Ltd. 2026. All rights reserved.

Without the written permission of the company, no entity or individual may excerpt, reproduce any part or all of the content of this document without authorization, nor may it disseminate it in any form.

Disclaimer:

The content of this Guide is for reference only. Specific operations should comply with local regulations and professional guidance. The company shall not be liable for any losses resulting from failure to follow the manual.

Attention:

The products, services, or features you purchase are subject to the commercial contracts and terms of Ginlong Energy Storage Co., Ltd. All or part of the products, services, or features described herein may not be available for your purchase or use. Unless otherwise specified in the contract, Ginlong Energy Storage Co., Ltd. makes no express or implied representations or warranties regarding the content of this document.

Due to product version upgrades or other reasons, this document may be updated periodically. Unless otherwise specified, this document is intended solely as a usage guide. All statements, information, and recommendations contained herein do not constitute any express or implied warranties.

1 Introduction:

Quick Commission is a brand-new SolisCloud feature. It provides clear, step-by-step guidance to walk you through the entire setup—from logger networking and device configuration to plant creation—in just minutes, allowing you to quickly and smoothly begin your PV system monitoring journey.

Ginlong Energy Storage Co., Ltd.

Address: No.57 Jintong Road, Binhai Industrial Park, DongChen, Xiangshan, 315712 Ningbo, Zhejiang, PEOPLE'S REPUBLIC OF CHINA

Tel: +86 (0)574 6578 1806 Email: info@ginlong.com

Web: www.solisstorage.com